

Park Place Village

PRINCETON



- 3 Bed, 2 Bath, Sunroom
- 3 Car Garage
- 2,300 Finished Square Feet on One Level
- Andersen 400 Series Windows
- Vaulted Ceilings & Premium Finishes
- Many Additional Options
- Association Maintained Executive Villa



Proudly Featuring



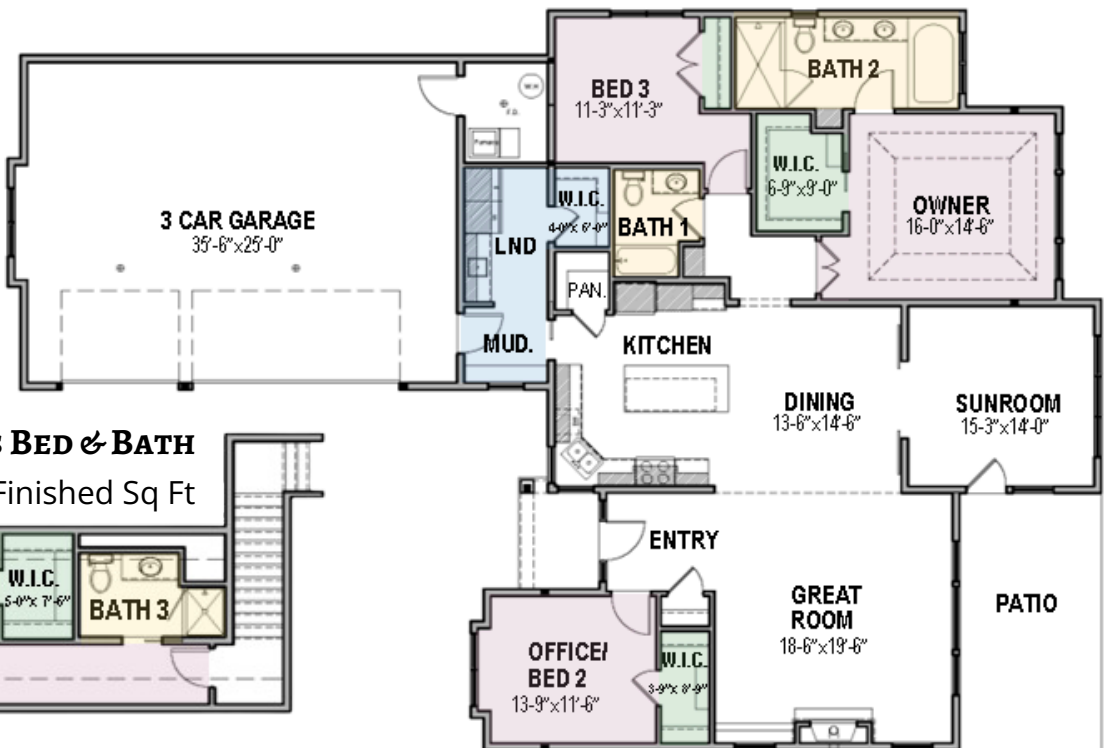
Starting at

\$824,900

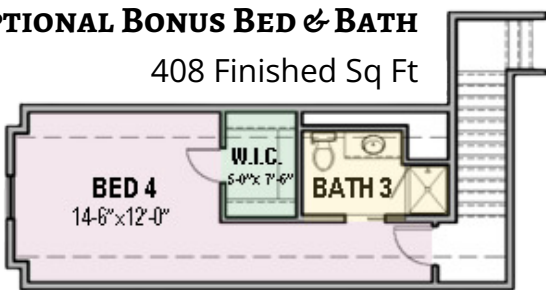
(Lots 30 - 49)

\$874,900

(Lots 50 - 53)



OPTIONAL BONUS BED & BATH
408 Finished Sq Ft



866-972-7575

parkplacevillage@divinerealestategroup.net